

# What's New Online

# ACROSSER COMPUTEX

May-June.2023



Hi Welcome !



*Edge AI  
Computing*



*AIOT  
Expert*



*Professional  
Networking*

# Edge AI Computing



## AAD-W480B

- Workstation-grade Platform : 10th Gen Intel® Xeon®/Core™ i9/i7 Processor (Comet Lake Socket), supports max 80W TDP CPU
- Support 2 DDR4 3200 SODIMM, up to 64GB (Non-ECC)
- Support 2 PCIe x16 With PCIe x8 Signal, 1 PCIe x4 Expansion Slots
- Could Supports 2 NVIDIA RTX 30 Series Graphics Cards (Max.320W Each card)
- CAN Bus Provide
- Two Front Easy Access 2.5" SATA III Storage Bay
- 9-55Vdc Power Input w/in-vehicle Power Ignition Control, up to 1,000W Power Input



## AAD-W480A

- Workstation-grade Platform : 10-core 10th Gen Intel® Xeon®/Core™ i9/i7/i5/i3 Processor (CML-S) running with Intel® W480E chipset supports max 80W TDP CPU
- Support 2 DDR4 3200 SODIMM, up to 64GB (Non-ECC)
- Support 1 PCIe x16, 1 PCIe x4 expansion slots
- Could Supports one NVIDIA RTX 30 series graphics cards (Max.320W)
- CAN Bus Provide
- Two Front Easy Access 2.5" SATA III Storage Bay
- 9-55Vdc Power Input w/in-vehicle Power Ignition Control, up to 500W Power Input



## AIV-TGH7E

- Intel® 11th Generation Core™ i7/i5/i3 Processor
- Support 1 DDR4 3200 SODIMM, up to 32GB
- Support 2.5GbE, USB 3.2 Gen2
- CAN Bus provide
- Two front easy access 2.5" SATA III storage bay
- 9-32Vdc w/in-vehicle power ignition control
- Fanless design
- Wide Operating Temperature -40~70°C

## Support RTX 3000 series Dual GPU AI & Edge Computing

AAD-W480B



AI Learning



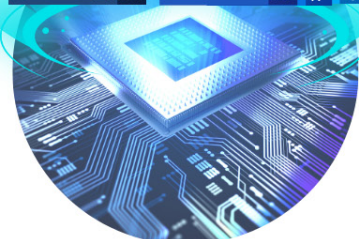
Machine Vision



Autonomous Driving



learn more



Dual GPU  
RTX 3000 series

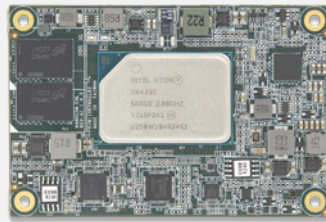


# AIOT Expert



## AES-EL6KA

- Onboard LPDDR4 Memory 4GB
- Onboard eMMC Storage up to 64GB
- Dual HDMI 2.0 displays up to 4K at 60Hz
- Dual RJ45 GbE Lan
- 2 x USB 3.2 Gen1, 2 x USB2.0
- 2 x RS232/422/485
- TPM 2.0
- Fan-Less design



## ACM-EL6KE0

- Intel Atom® x6000E, Pentium®, Celeron® series Processor
- Onboard Memory LPDDR4, up to 16GB
- Intel i226IT 2.5GbE x 1
- 18/24-bit Single Channel LVDS/eDP, DDI x 1
- SATA3 x 2 , Onboard eMMC up to 64GB (Optional)
- USB 2.0 x 8, USB 3.2 10Gbps x 2
- PCIe [x1] x 4
- COM Express Mini Size, Type 10, COM.0 R2.1



## ACM-TGLUE0

- 11th Generation Intel® Core™ Processor Family (formerly Tiger Lake UP3)
- Onboard LPDDR4x Memory 16 GB
- 2.5 Gigabit Ethernet x 1
- eDP x 1 , DDI x 1
- High Definition Audio Interface
- SATA3.0 x 2 , onboard PCIe SSD 64GB
- USB 2.0 x 8, USB 3.2/2.0 x 2 (up to USB 3.2 Gen 2 support)
- 4 x PCI-Express x 1
- COM Express Type 10, Mini Size, 84 mm x 55 mm

**Compact. Flexible. Efficient**  
Delivering rugged edge IoT solutions for demanding environments

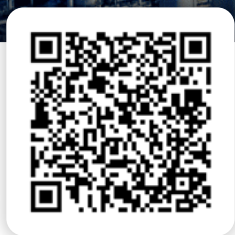


Marine Military Industrial

learn more

ACM-EL6KE0  
AES-EL6KA

The image shows a hand holding a small IoT device (AES-EL6KA) against a background of industrial and marine scenes. Three circular icons represent Marine, Military, and Industrial applications. A QR code is visible in the bottom left corner of the banner.



IoT Edge Embedded System  
**AES-EL6KA**  
**Compact Design**  
140 x 90 x 45mm



Intel Atom®  
x6000E Celeron®  
series

# Professional Networking



## ANR-ICEDA1

- Intel® Xeon® ICE-Lake-D LCC Processor
- 12 x 1Gb RJ45 ports
- 2 Pairs LAN Bypass
- 1 x NIM(Network Interface Module) slots
- Support 2 x 2.5" SATA-III Storage Devices
- 1x LCM with Keypad

## ANR-W480A

- Intel® 10th Gen Comet Lake-S Xeon W, Core™ i9/i7/i5/i3
- 4 x UDIMM DDR4
- 2 x Exp. NIM (1G/10G/40G, Fiber/Copper/LAN Bypass)
- 1 x Serial Console (RJ-45)
- 2 x 1G Fiber
- 9 x GbE Copper with 2-pairs LAN Bypass
- 2 x 2.5" SATA-III
- 1 x M.2
- Optional for ATX 300W or 1+1 Redundant PSU (300W)

## AND-DNV3B

- Intel® Atom® C3338R/C3558/C3758 Processor
- Support 1 x DDR4 ECC/Non-ECC SODIMM
- Support 6 x 2.5GbE, 2 x 1GbE SFP, 2 x 10GbE SFP+
- Support 1-pair Bypass
- Optional 3G, 4G LTE, 5G, WiFi And WiFi 6

## ANR-ICEDA1 Optimize Your Network Infrastructure

SD-WAN / NFV Solution 1U Rackmount Appliance

- Intel Ice Lake-D Xeon Platform
- Support 1 LAN Port Expansion Module



AI Edge Server



1 x NIM slots •  
Support 1 LAN Port Expansion Module

- ACC-NM1ZA-01C4  
1G Copper x 4



- ACC-NM1ZA-10F4  
10G SFP+ x 4



**Acrosser Headquarters**  
新北市三重區重新路5段609巷4號3樓之8  
Rm. 8, 3F., No. 4, Ln. 609, Sec. 5, Chongxin Rd.,  
Sanzhong Dist., New Taipei City 241402, Taiwan  
TEL: +886-2-29999000  
FAX: +886-2-29992887

**Acrosser USA Inc.**  
324 W. Blueridge Avenue,  
Orange CA 92865  
TEL: (714)728-6964

**Acrosser China Subsidiary**  
深圳市欣扬通电子有限公司  
深圳市福田区泰然八路安华工业区4栋5层505室 (邮编:518040)  
Room 505, Floor 5, Building 4, Anhua Industrial Zone, Tairan 8th Road,  
Futian District, Shenzhen, China (Postal:518040)  
TEL: +86-755-83542210  
FAX: +86-755-83700087