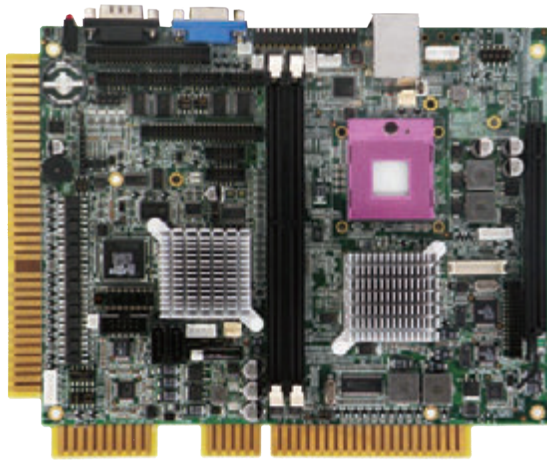


ACE-B5692

Intel GME965 All-in-One Gaming Board
with International and Italian JAMMA Interface



Features

- GME965 with Core 2 Duo/Celeron M
- 30-bit Interruptible Digital Input
- 27-bit High Current Output
- 8 Liner and Italian JAMMA Interface
- Dual 512KB Battery Backup SRAM with Battery Low Event Logger
- Dual VGA
- 4 x 16-bit Interruptible Timer
- 7-bit Intrusion Logger Input



Invention Patent I334065

Specification

General PC Feature

| | |
|-----------------|--|
| CPU | Intel Core 2 Duo 2.20GHz Intel Celeron M 2.0GHz |
| Chipset | Intel GME965 + ICH8M |
| Memory | • 2 x 240-pin DIMM socket support 533/667MHz Dual Channel DDR2 SDRAM up to 4GB |
| Battery | • 1 x 220 mAh battery for system RTC • 2 x 140 mAh re-chargable batteries for SRAM, Second RTC, Intrusion Logger |
| Real Time Clock | 1 x system RTC and 1x secured RTC |
| Fan Connector | 2 x 12V fan connector |

Video

| | |
|--------------------|--|
| Graphic Controller | Intel GME965 integrated GMA X3100 graphic controller supports OpenGL 1.5, DirectX 10 |
| Video Memory | shared memory |
| Video Interface | 2 x VGA (1 x DB15, 1 x pin header optional DVI-I) |
| Expansion Slot | 1 x PCI-E x16 slot |

Storage

| | |
|------|---|
| IDE | 1 x IDE (40-pin) |
| SATA | 2 x SATA port |
| CF | 1 x Compact Flash Type I/II socket support UDMA |

Communication

| | |
|-------------|---|
| Ethernet | 1 x GbE RJ45 with LED, Intel 82574L |
| USB | 6 x USB 2.0 (2 x external port, 4 x pin header) |
| Serial Port | • 3 x RS-232 (1 x DB9, 2 x pin header) • 2 x ccTalk/RS-232 DB9 connector |

Audio

| | |
|----------------|---------------------|
| Output | Stereo |
| Amplifier | 6 Watts per channel |
| Volume Channel | Left channel |

Other Feature

| | |
|---------------------|---|
| PS/2 | 1 x PS/2 pin header |
| Hardware Monitoring | • CPU voltage and speed • CPU and system temperature |
| WatchDog Timer | Software programmable 1~255 sec. |
| Indicator | HDD and Power LED |

Gaming I/O

| | |
|-------------------------|---|
| I/O Interface | 8 Liner (72-pin) and Italian JAMMA interface |
| Digital Input | • 25 x optical isolated input, 5 x TTL input • State change interrupt |
| Digital Output | 3 x 1000 mA and 24 x 500 mA digital output |
| Readable DIP Switch | 2 x 8-bit DIP switch |
| GPIO (TTL Level) | 28 bits |
| Timer | 4 x 16-bit timers with time out interrupt |
| Battery backup SRAM | • 2 x 512KB • 140 mAh rechargeable battery • Battery voltage low log and voltage readback |
| EEPROM | 1K Bytes |
| Intrusion Logger | • 1 x chassis intrusion switch + 5 bits on golden fingers • 10 events with time stamps • 140 mAh rechargeable battery • battery voltage low log and voltage readback |
| Smart Card Reader | Optional |
| Random Number Generator | 16 bits |

Power Requirement

| | |
|-------------------|---|
| Power Input | 5V (+/-5%) and 12V (+/-5%) input on golden finger |
| Power Consumption | 60W without external devices |

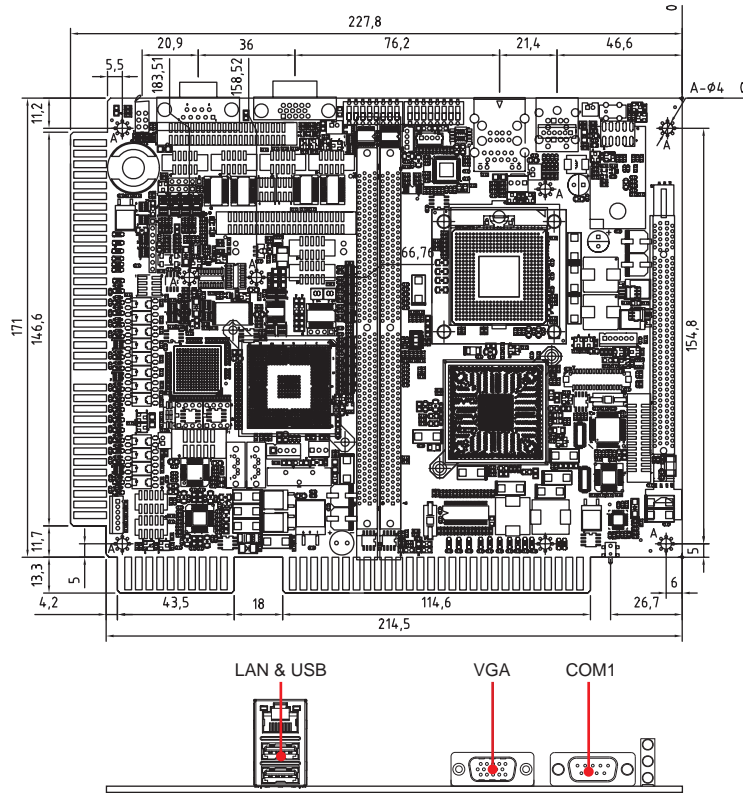
Software

| | |
|--------------------------|--|
| OS Support | Windows XP/XP Embedded, Linux |
| Software Development Kit | • Device driver • Application Program Interface (API) • Demo program |

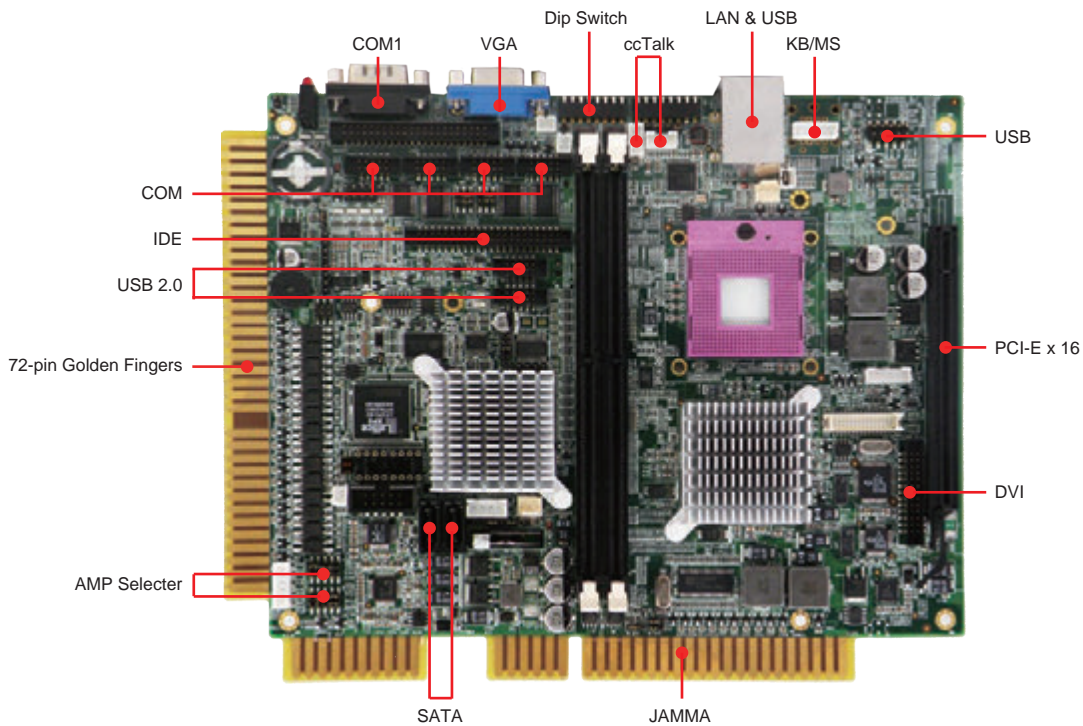
Mechanical & Environment

| | |
|-------------------|--------------------------------|
| Dimension | 171mm x 214mm (6.74" x 8.43") |
| Weight | Net: 337g (0.8Lb) |
| Operating Temp. | 0~60°C (32~140°F) |
| Storage temp. | -20~80°C (-4~176°F) |
| Relative Humidity | 0 ~ 90% @ 40°C, non-condensing |
| Safety | CE, FCC compliant |

Dimension



I/O Connectors



Packing List

- 1 x ACE-B5692
- 1 x Driver CD
- 1 x Quick user manual

Ordering Information

| | |
|-----------------|---|
| ACE-B5692FLi75 | Intel Core 2 Duo T7500 2.20GHz, FSB 800MHz and 4MB L2 cache |
| ACE-B5692FLCM55 | Intel Celeron M 550 2.0GHz, FSB 533MHz and 1MB L2 cache |